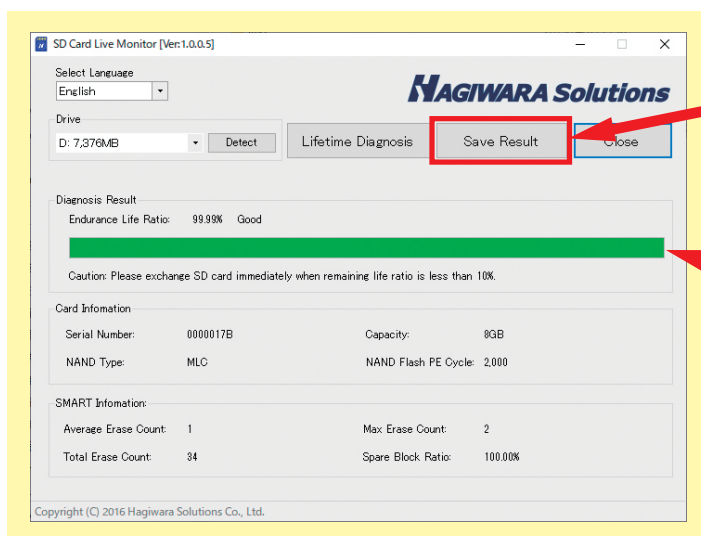


# Life Prediction Tools



## Livemonitor Software

You can diagnose the life of Hagiwara Flash Storages, using Livemonitor software.



You can export the log data.  
\*Excel format

### Life Indicator

**Green**

Rest of life: **more than 20 %**

**Yellow**

Rest of life: **10 % to 20 %**

**Red**

Rest of life: **less than 10 %**

GUI supports visual management.

\*We also offer you API.



## Features

### Device Information

- | S.M.A.R.T. Values
- | Temperature
- | Life Estimate

### Access Analysis <sup>\*1</sup>

- | Read/Write Ratio
- | Data Transfer Size Ratio
- | Sequential Access Ratio

### Device Settings <sup>\*2</sup>

- | Perform Secure Erase
- | PSID Revert to reset TCG Opal settings
- | Enable eDrive (IEEE1667)

### Block Information <sup>\*1</sup>

- | Drive Map
- | Utilization Rate
- | Erase Count
- | Read Count
- | Reallocated Count

### Other Functions <sup>\*2</sup>

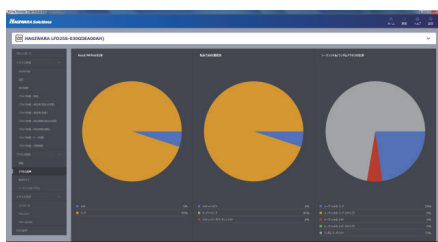
- | Firmware Update
- | PDF Report

<sup>\*1</sup>: Compatible SATA 6.0Gbps models only.

<sup>\*2</sup>: Target SSD must have corresponding functions.

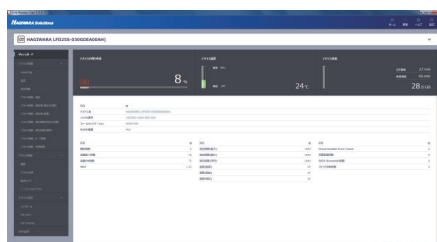
## Drive Monitoring

### Access Pattern Analysis



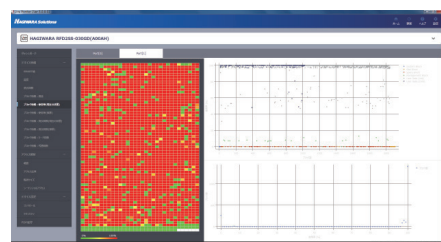
Provides in-depth SSD access pattern analysis for system performance optimization.

### Access Analysis <sup>\*1</sup>



Provides accurate life estimation based on real usage data.

### Block Information <sup>\*1</sup>



Visualizes SSD usage at block level to help determining optimal device configuration for maximized life.

**HAGIWARA Solutions**

Tokyo  
office

2F, Kudan First Place,  
4-1-28, Kudankita, Chiyoda-ku, Tokyo, Japan, 102-0073  
Landline: +81-3-3556-5016

For more information, please contact us by e-mail. Send email to: [hsolsupport@hagisol.co.jp](mailto:hsolsupport@hagisol.co.jp)

Contact one of our branches

Monday to Friday (excepting public holidays, summer vacation, the end of year and New Year period, and special closing days)

Visit our web-site for the latest information on our services. <https://www.hagisol.com>

■ The names of companies and products mentioned in this leaflet are registered trade-marks or generally trademarks.

■ The information contained in this leaflet is subject to change without prior notice due to product development stages.

■ Our company shall not be liable for any disadvantages, damages or losses, etc., arising in connection with the use of contents in this leaflet.

HSS21013-A01

■ Partner :